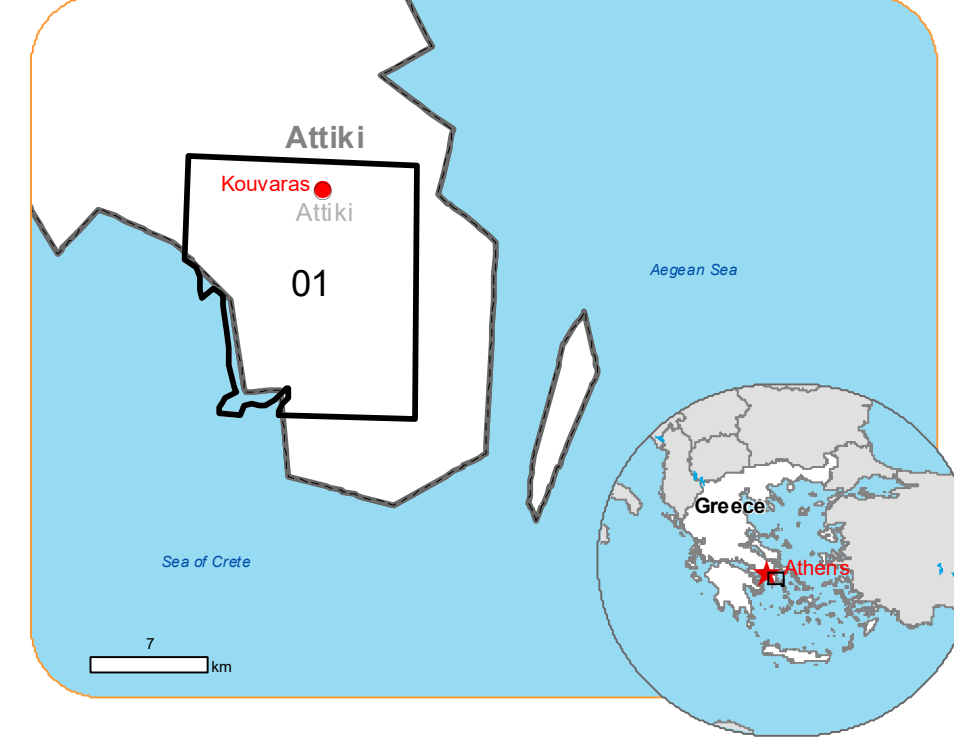


EMSR672 - AOI01
Wildfire in Greece
KOUVARAS

Situation as of 18/07/2023 09:02 UTC
 Delineation - Overview map 01



Burnt area 3,472.4 ha **Potentially affected population ~ 1500**

Potentially Affected Built-up and Transportations

Built-Up 164.4 ha **Road 119.2 km** **Railway 0.9 km**

Crisis Information

- Burnt area

General Information

- Area of Interest
- Image Footprint

Administrative boundaries

- Not Analysed
- Municipality

Built-Up Area

- Residential
- Non residential
- School, university and research buildings
- Hospital or institutional care buildings
- Military

Hydrography

- Coastline
- Stream
- Lake

Facilities

- Long-distance pipelines or lines
- Power plant
- Sport and recreation constructions
- Water or Aquatic infrastructure

Transportation

- Highway
- Main road
- Local road
- Track
- Railway
- Helipad

	Current		Forecast	
	Jul 18, 09:02 UTC	Jul 19, 09:02 UTC	Jul 20, 09:02 UTC	Jul 21, 09:02 UTC
Wind direction and speed	🌀 27 km/h	🌀 29 km/h	🌀 19 km/h	🌀 19 km/h
Temperature and relative Humidity	🌡️ 30° 48%	🌡️ 30° 41%	🌡️ 31° 46%	🌡️ 31° 46%

Data retrieved from ECMWF on Jul 18, 09:02 UTC. Calculated at: 37.781°N, 23.952°E.

Event:
 In the early afternoon of 17 July 2023, a wildfire affecting eastern Attica in Greece has been signalled. The event is on-going and spreading through low vegetation. Copernicus EMS Rapid Mapping has been activated to provide initial rough estimation products, in order to support the assessment of the extent of the wildfire and the damage caused.

Data sources and analysis: Pre-event image: ESRI World Imagery © DigitalGlobe (acquired on 14/04/2022, resolution 0.6 m). Post-event image: Pléiades-1A/B © CNES (2023), distributed by Airbus DS (acquired on 18/07/2023 at 09:02 UTC, resolution 2.0 m). This image is used as background image. All images are provided under COPERNICUS by the European Union and ESA, all rights reserved.

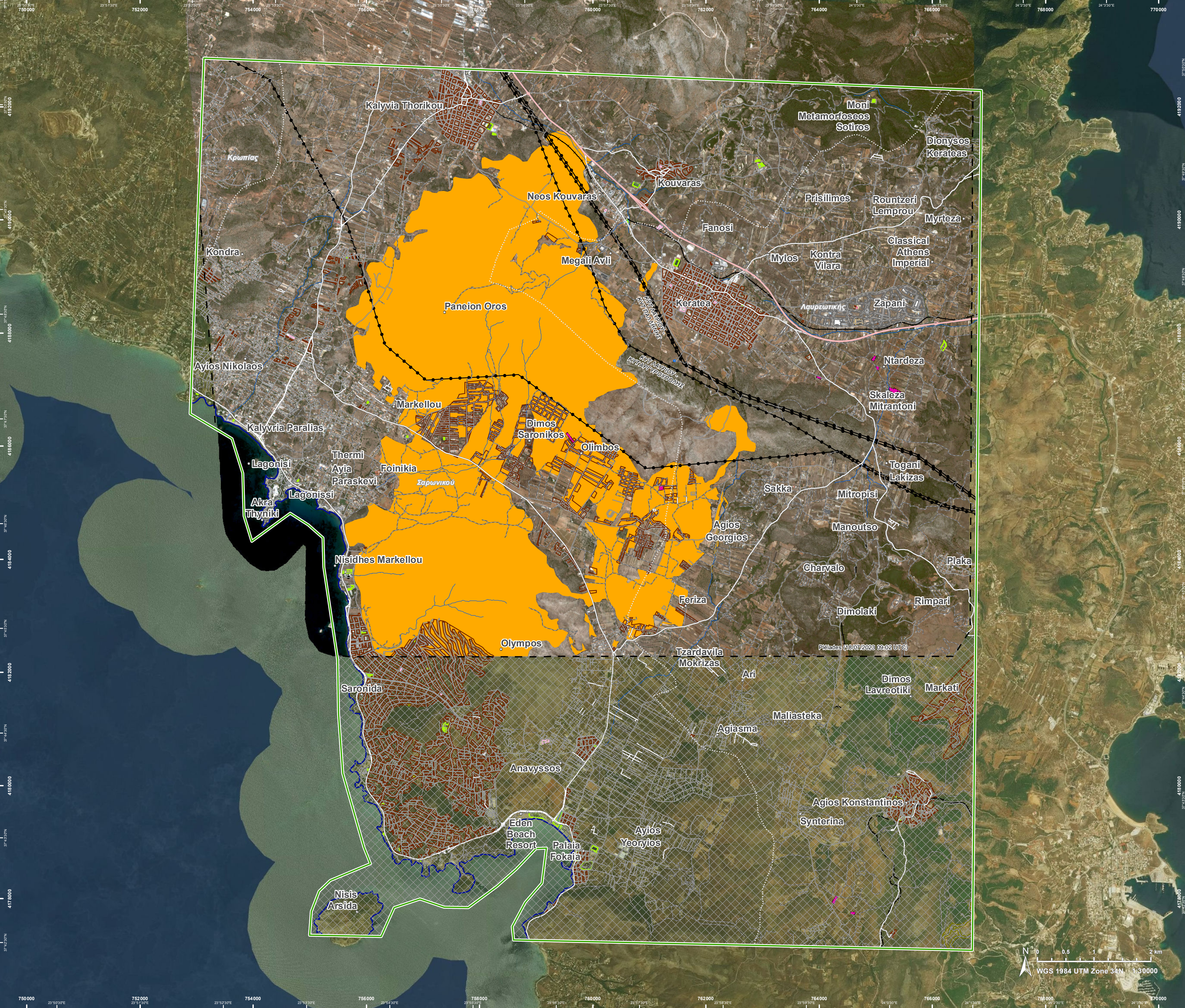
Base vector layers: OpenStreetMap © OpenStreetMap contributors (2023), Wikimapia.org, GeoNames 2015, Corine Land Cover (CLC) 2018, EuroBoundaryMap 2017 © EuroGeographics, Inset maps: JRC 2013, GISC 2010 © EuroGeographics, Natural Earth 2012, CCM River DB © EUJRC2007, GeoNames 2015.

Population data: GHS Population Grid © European Commission, 2022 https://ghsl.jrc.ec.europa.eu/ghs_pop2022.php
 Digital Elevation Model: COP-DEM-EEA-10-R product © DLR e.V. (2014-2018) and © Airbus Defence and Space GmbH (2020) provided under COPERNICUS by the European Union and ESA, all rights reserved.

The thematic layer has been derived from post-event satellite image using a by means of visual interpretation.

Map produced by e-GEOS released by e-GEOS on the 18/07/2023.

Details on this activation and service conditions available through the QR code or at the link: <https://emergency.copernicus.eu/EMSR672>



Consequences within the AOI				
		Unit of measurement	Affected	Total in AOI
Burnt area		ha		3,472.4
Estimated population	Number of inhabitants		~ 1,500	~ 30,000
Built-up	Residential Buildings	ha	164.4	681.0
	Office buildings	ha	0.0	2.0
	Industrial buildings	ha	0.0	57.2
	School, university and research buildings	ha	0.0	2.4
	Hospital or institutional care buildings	ha	0.0	0.0
	Military	ha	0.0	16.4
	Cemetery	ha	0.0	2.8
Transportation	Helipad	ha	0.0	0.2
	Highways	km	0.3	22.0
	Primary Road	km	0.5	37.5
	Secondary Road	km	2.2	56.9
	Local Road	km	31.6	706.7
	Cart Track	km	84.6	610.4
	Railway Yard	km	0.0	0.2
	Long-distance railways	km	0.9	14.6
Facilities	Settling Basin	ha	0.0	1.6
	Breakwater	ha	0.0	0.1
	Power plant constructions	ha	1.4	5.3
	Sport and recreation constructions	ha	0.0	20.3
	Long-distance pipelines, communication and electricity lines	km	11.8	53.6
Land use	Shrub and/or herbaceous vegetation association	ha	1,191.9	4,599.1
	Open spaces with little or no vegetation	ha	1,122.8	1,442.8
	Heterogeneous agricultural areas	ha	746.2	4,644.2
	Other	ha	162.0	4,301.6
	Forests	ha	122.0	1,006.0
	Pastures	ha	113.4	347.3
	Permanent crops	ha	14.1	2,678.0

Disclaimer:

Full disclaimer and other helpful information available in the online manual:
<https://emergency.copernicus.eu/mapping/ems/online-manual-rapid-mapping-products>
 © European Union / Copernicus Emergency Management Service

Data access:

All data displayed on the map(s), as well as the Physiography and Land Use - Land Cover layers, are available in the Crisis Information Package and the Base Layer Package (for reference data). The table above is available in editable format in the Crisis Information Package. All products and data are also available for download on the portal.

Access to the portal

